



Westchester
County Planning
Department

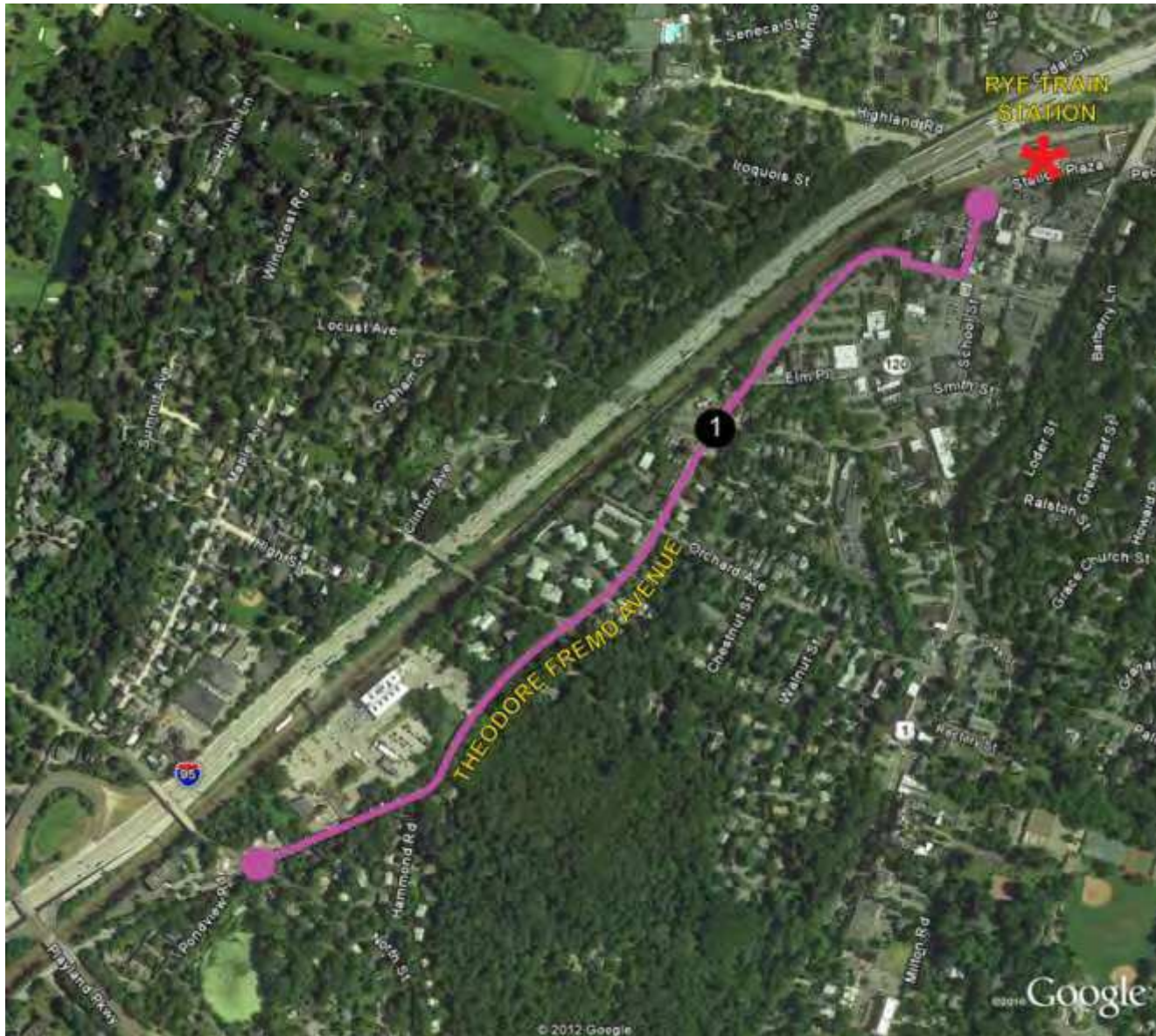


Rye Playland Parkway Pathway

Expansion & Rehabilitation



Segment #1 – Rye Station to North Street via Theodore Fremd Avenue



SEGMENT 1 - FROM RYE TRAIN STATION TO NORTH ST.



Westchester
gov.com
Robert P. Astorino, Westchester County Executive
County Board of Legislators

signed shared roadway w/ sidewalks

Route begins and ends at property line at the southeast edge of the **Rye Metro North Train Station** through the Rye business district, along Theodore Fremd Avenue to North Street. Improvements will include:

- New sidewalk segments and crosswalk striping;
- Interpretive plaques describing the history & ecology of Blind Brook, which is crossed;
- “Share the Roadway” signs & directional signs.



Rye Metro-North Station (above)



Parking Lot at Rye Station



Mayland Pathway Route

segment #1 – Rye Station & Business District



SEGMENT 1 - FROM RYE TRAIN STATION TO NORTH ST.



Westchester
gov.com
Robert P. Astorino, Westchester County Executive
County Board of Legislators

Existing Conditions Photos



McDougall Place Sidewalk



2nd Street



Intersection of Theodore Fremd Avenue & Purchase Street



Purchase and Station Plaza Intersection

Existing Conditions Photos



Theodore Fremd Ave. at Blind Brook



Theodore Fremd Avenue at Orchard Avenue

SEGMENT 1 - FROM RYE TRAIN STATION TO NORTH ST.



Shared lane Pavement Markings and Signage - 'Sharrows'

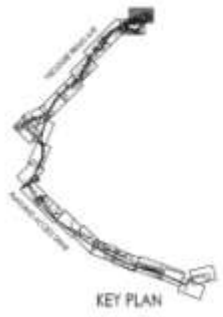
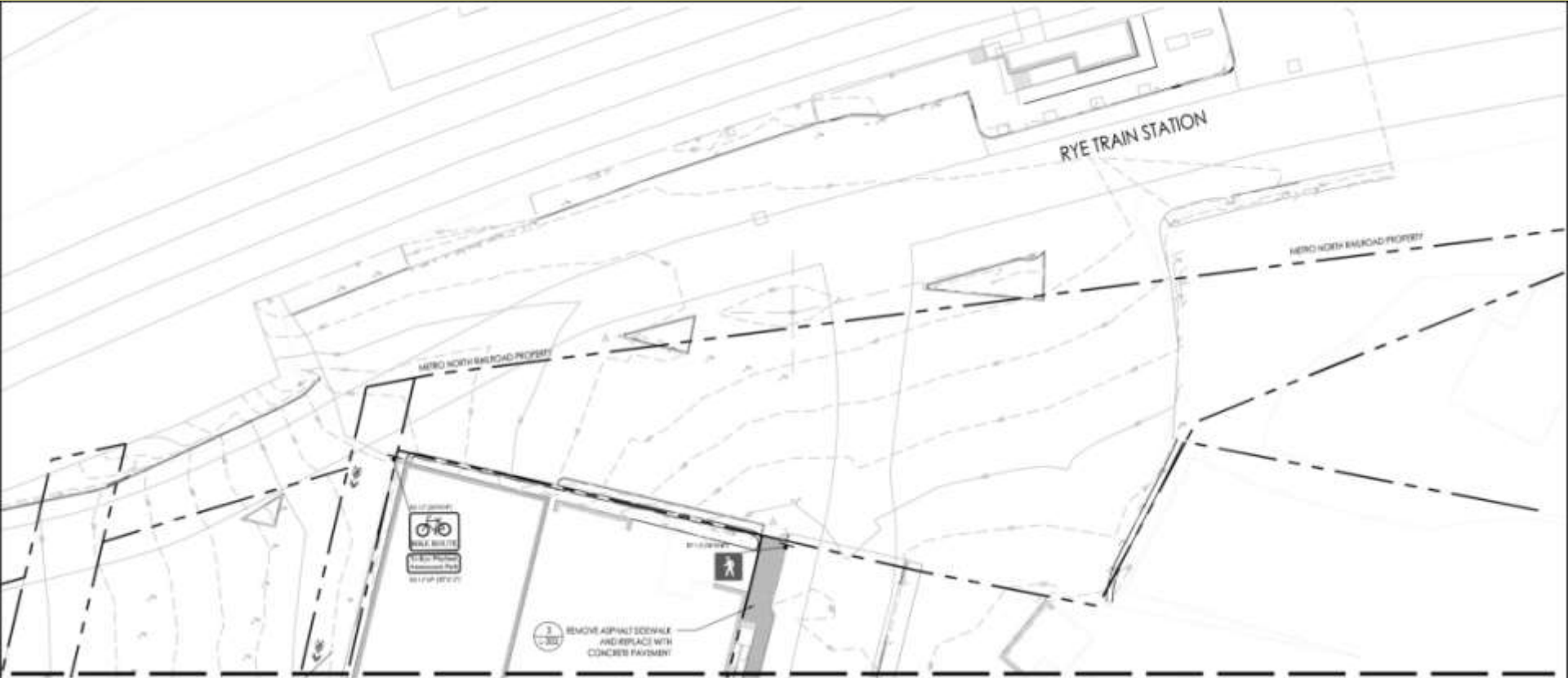


Playland Parkway Route Construction Drawings



Westchester.gov.com
 Robert P. Astorino, Westchester County Executive
 County Board of Legislators

Segment 1



1 GENERAL PLAN
 SCALE 1/8" = 1'-0"



RBA ENGINEERS ARCHITECTS PLANNERS 40 BURGESS DRIVE, SUITE 200, GLENVILLE, NY 10924 TEL: 845.368.4000 FAX: 845.368.5880 WWW: RBAONLINE.COM			WESTCHESTER COUNTY, NEW YORK DEPARTMENT OF PUBLIC WORKS AND TRANSPORTATION DIVISION OF ENGINEERING				PROJECT NUMBER: _____ DRAWING NUMBER: _____ SHEET NUMBER: _____ DATE: _____ SCALE: AS SHOWN PROJECT TITLE: RYE PLAYLAND PARKWAY PATH
DESIGNED BY: ALC BERTHIAUM CHECKED BY: ALC BERTHIAUM DRAWN BY: CHANG WANG	PROJECT NO: _____ SHEET NO: _____ DATE: _____	REVISIONS: _____ NO. DESCRIPTION DATE BY	NO. DESCRIPTION DATE BY	NO. DESCRIPTION DATE BY	NO. DESCRIPTION DATE BY	NO. DESCRIPTION DATE BY	

Playland Parkway Route Construction Drawings

Segment 1



1 GENERAL PLAN
SCALE 1/8" = 1'-0"

 RBA ENGINEERS ARCHITECTS PLANNERS 10 WOODLAND AVENUE SUITE 200 WESTCHESTER, NY 10598 TEL: 914.938.1100 FAX: 914.938.1101 WWW.RBA-NY.COM	PROJECT NO.	DATE	SCALE	BY	CHECKED	APPROVED	REVISION	WESTCHESTER COUNTY, NEW YORK DEPARTMENT OF PUBLIC WORKS AND TRANSPORTATION DIVISION OF ENGINEERING	DRAWING NO. DATE SHEET NO.
	PROJECT NAME	PROJECT NO.	DATE	SCALE	BY	CHECKED	APPROVED	RYE PLAYLAND PARKWAY PATH 1-301	DRAWING NO. 4 OF 28 DATE 08/20/11 SHEET NO. 1

KEY PLAN

Playland Parkway Route Construction Drawings

Segment 1



LEGEND	
	PROPERTY LINE
	EXISTING LIGHT POLES
	EXISTING SIGN
	EXISTING TRAFFIC LIGHTS
	EXISTING FIRE HYDRANT
	EXISTING CATCH BASIN
	EXISTING GUARDRAIL
	EXISTING VEGETATION
	SIDEWALK AND PATHWAY
	CONCRETE PEDESTRIAN RAMP
	SOBS
	NEW CURB/RAIL

1 GENERAL PLAN
SCALE 1/8" = 1'-0"



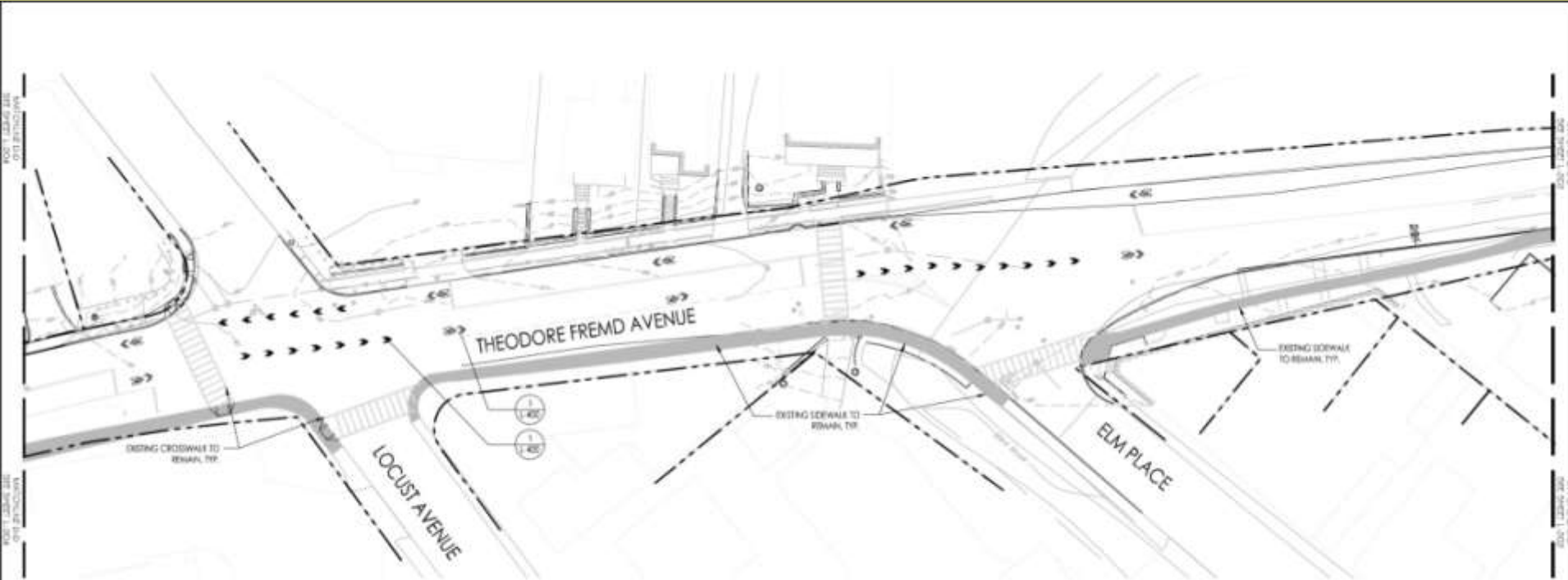
 RBA ENGINEERS ARCHITECTS PLANNERS 40 WOODLAND AVENUE SUITE 200 WESTCHESTER NY 10598 TEL: 914.938.1100 FAX: 914.938.1101 WWW: RBA-NY.COM	PROJECT NO.: SHEET NO.:	WESTCHESTER COUNTY, NEW YORK DEPARTMENT OF PUBLIC WORKS AND TRANSPORTATION DIVISION OF ENGINEERING	PROJECT NUMBER: SHEET NUMBER:
	PREPARED BY: A.J.M. BOFFMAN CHECKED BY: G.L.D. BOFFMAN DESIGNED BY: C.A.G. DE WAZE	DATE: 10/11/11 SCALE: AS SHOWN DRAWN BY:	RYE PLAYLAND PARKWAY PATH L-202

Playland Parkway Route Construction Drawings



Westchester
gov.com
Robert P. Astorino, Westchester County Executive
County Board of Legislators

Segment 1



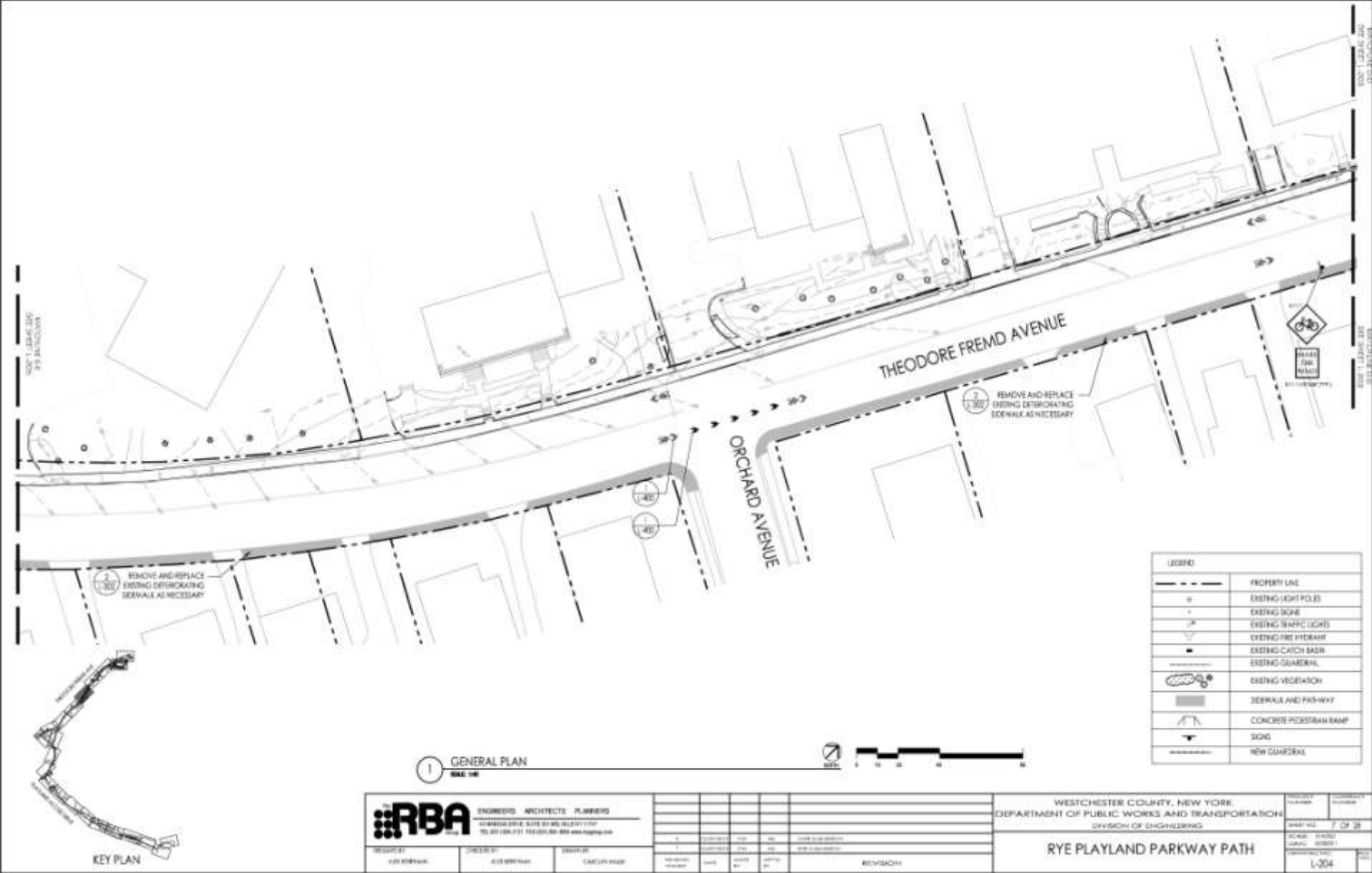
LEGEND	
	PROPERTY LINE
	EXISTING LIGHT POLES
	EXISTING SIDEWALK
	EXISTING TRAFFIC LIGHTS
	EXISTING FIRE HYDRANT
	EXISTING CATCH BASIN
	EXISTING GUARDRAIL
	EXISTING VEGETATION
	SEWHALE AND PATHWAY
	CONCRETE PEDESTRIAN RAMP
	SIDEWALK
	NEW GUARDRAIL



RBA ENGINEERS ARCHITECTS PLANNERS 100 WOODLAND DRIVE, SUITE 200, RYE, NY 10580 TEL: 914.931.1111 FAX: 914.931.1111 www.rba.com	PROJECT NO.: SHEET NO.:	WESTCHESTER COUNTY, NEW YORK DEPARTMENT OF PUBLIC WORKS AND TRANSPORTATION DIVISION OF ENGINEERING	PROJECT NO.: SHEET NO.:
	DRAWN BY: A.J. BOYD CHECKED BY: C. BOYD DATE:	PROJECT TITLE: RYE PLAYLAND PARKWAY PATH	SHEET NO.: 1 OF 28

Playland Parkway Route Construction Drawings

Segment 1

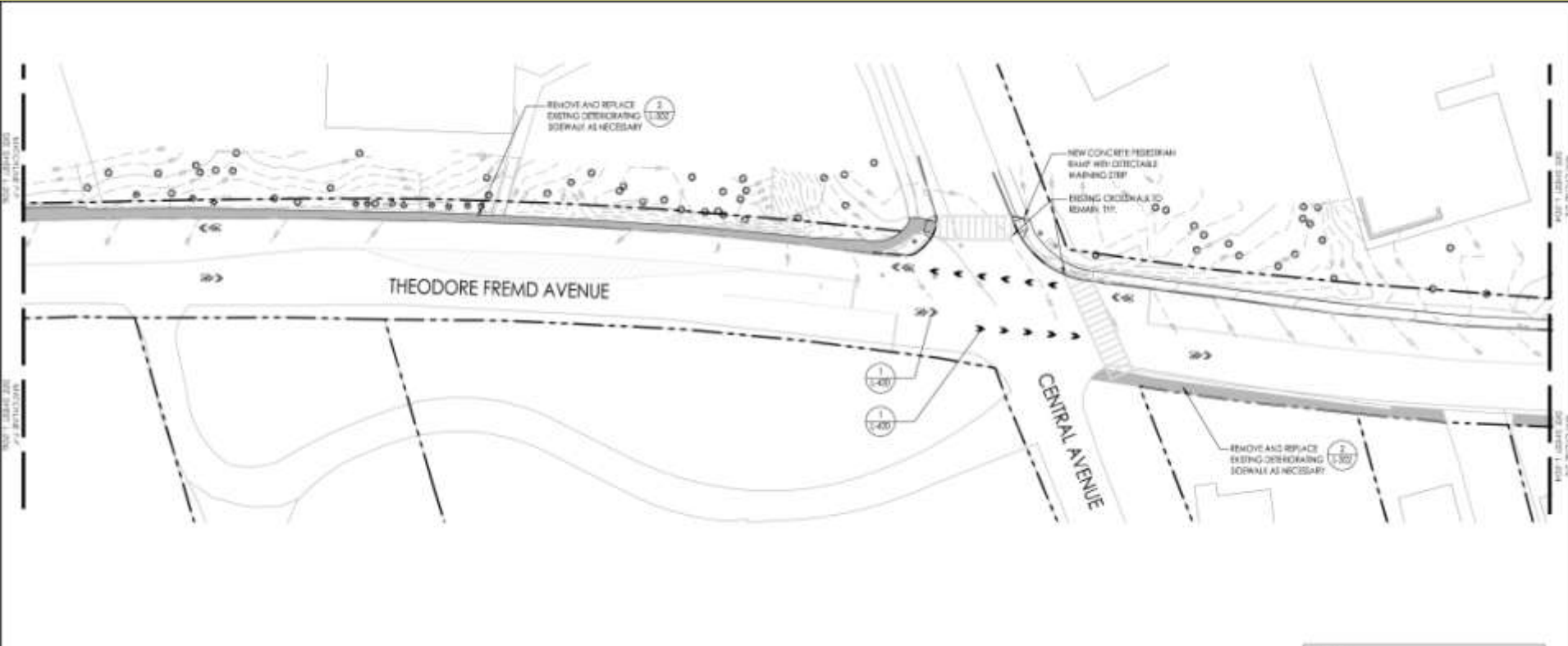


Playland Parkway Route Construction Drawings



Westchester
gov.com
Robert P. Astorino, Westchester County Executive
County Board of Legislators

Segment 1



1 GENERAL PLAN
SCALE 1/8" = 1'



LEGEND	
---	PROPERTY LINE
*	EXISTING SIGN POSTS
+	EXISTING SIGNS
⚡	EXISTING TRAFFIC LIGHTS
⌒	EXISTING TRE/HYDRANT
■	EXISTING CATCH BASIN
▬	EXISTING GUARDRAIL
🌳	EXISTING VEGETATION
▬	SIDEWALK AND PATHWAY
⚡	CONCRETE PEDESTRIAN RAMP
⬇	ZONE
---	NEW GUARDRAIL

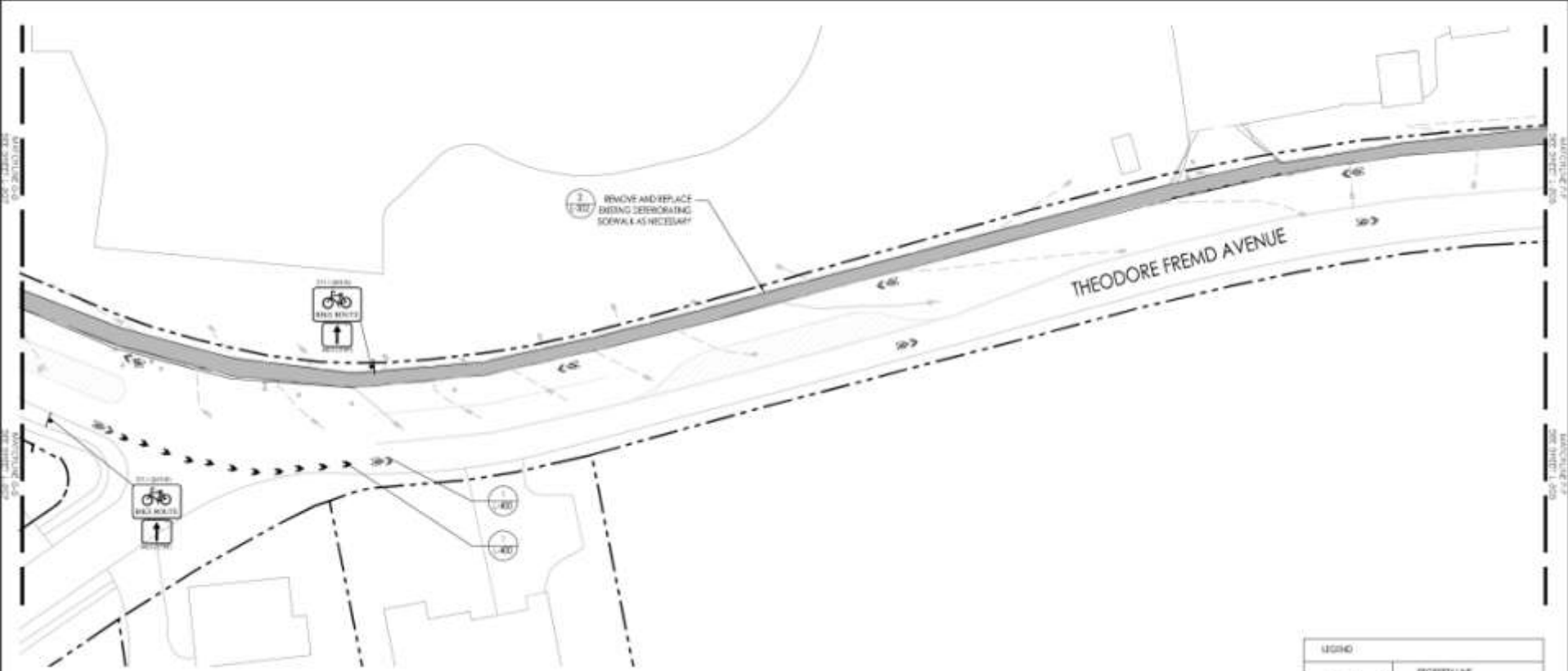
RBA ENGINEERS ARCHITECTS PLANNERS 30 MARSHALL DRIVE, SUITE 201, MELVILLE, NY 11767 TEL: 631 884 7744 FAX: 631 884 8899 www.rbaeng.com	PROJECT NO.: SHEET NO.:	WESTCHESTER COUNTY, NEW YORK DEPARTMENT OF PUBLIC WORKS AND TRANSPORTATION DIVISION OF ENGINEERING	SHEET NO. 8 OF 28 SCALE: AS SHOWN DATE: 08/2011
	DESIGNED BY: ANDREW WALKER CHECKED BY: CAROLYN ROSS DRAWN BY: JAMES W. WALKER APPROVED BY:	RYE PLAYLAND PARKWAY PATH	

Playland Parkway Route Construction Drawings



Westchester
gov.com
Robert P. Astorino, Westchester County Executive
County Board of Legislators

Segment 1



LEGEND	
	PROPERTY LINE
	EXISTING LIGHT POLES
	EXISTING SIONS
	EXISTING WAIRC LIGHTS
	EXISTING FRET HYDANT
	EXISTING CATCH BASIN
	EXISTING GUARDRAIL
	EXISTING VEGETATION
	SIDEWALK AND PATHWAY
	CONCRETE PEEKER/RAMP
	SIENS
	NEW GUARDRAIL



1 GENERAL PLAN
SCALE: 1/8" = 1'-0"



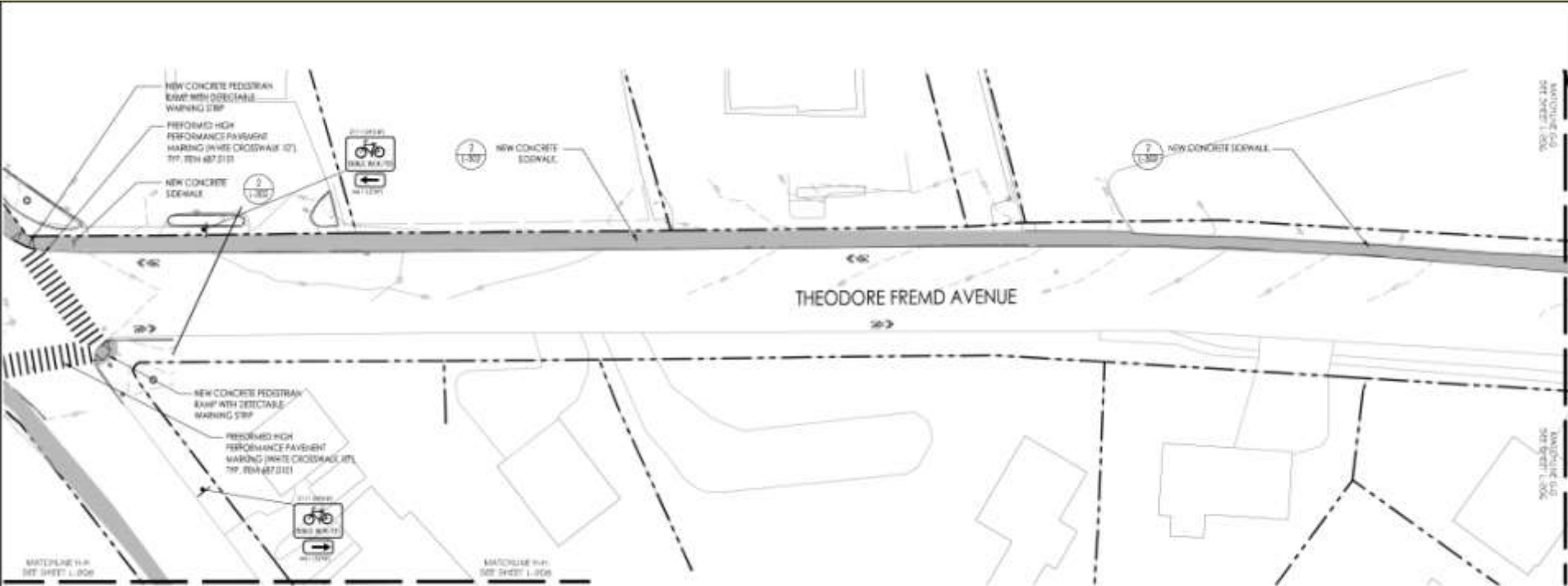
RBA ENGINEERS ARCHITECTS PLANNERS 25 WALLKILL DRIVE SUITE 201 MELVILLE NY 11767 TEL: 631 881 7744 FAX: 631 881 8818 www.rbaeng.com	PROJECT NO.: SHEET NO.:	WESTCHESTER COUNTY, NEW YORK DEPARTMENT OF PUBLIC WORKS AND TRANSPORTATION DIVISION OF ENGINEERING	PROJECT NO.: SHEET NO.:
	DRAWN BY: CHECKED BY: DATE:	PROJECT NO.: SHEET NO.:	RYE PLAYLAND PARKWAY PATH

Playland Pathway Route Construction Drawings



Westchester.gov.com
 Robert P. Astorino, Westchester County Executive
 County Board of Legislators

Segment 1

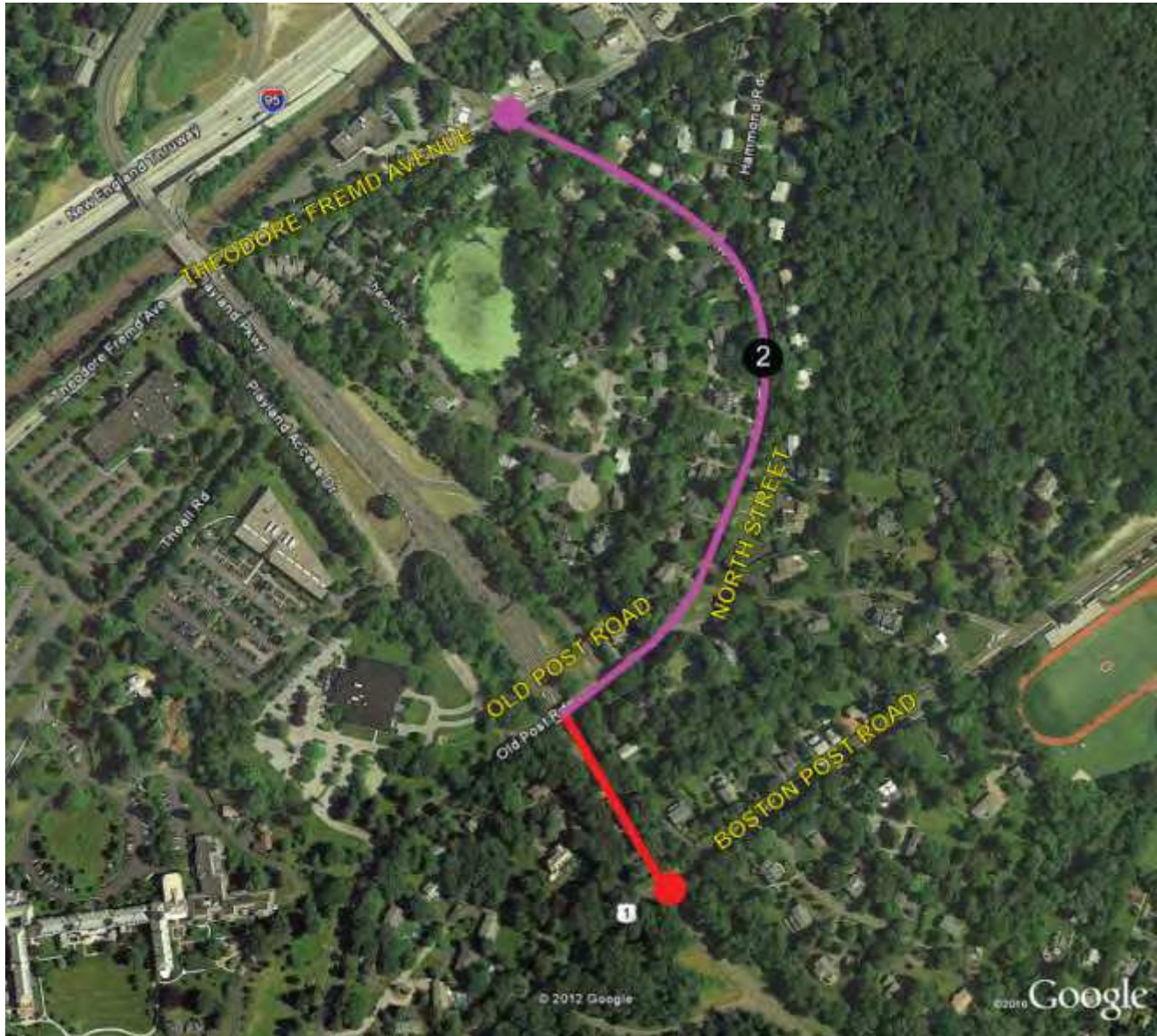


LEGEND	
	PROPERTY LINE
	EXISTING LIGHT POLES
	EXISTING SIGNS
	EXISTING TRAFFIC LIGHTS
	EXISTING FIRE HYDRANT
	EXISTING CATCHBASIN
	EXISTING GUARDRAIL
	EXISTING VEGETATION
	SIDEWALK AND PATHWAY
	CONCRETE SIDEWALK RAMP
	SOI
	NEW GUARDRAIL

1 GENERAL PLAN
 SCALE: 1/8" = 1'-0"

RBA ENGINEERS ARCHITECTS PLANNERS 11 WARDEN DRIVE, SUITE 201, MELVILLE, NY TEL: 631.684.7741 FAX: 631.684.8844 WWW.RBA-NY.COM	PROJECT NO.: SHEET NO.:	WESTCHESTER COUNTY, NEW YORK DEPARTMENT OF PUBLIC WORKS AND TRANSPORTATION DIVISION OF ENGINEERING	PROJECT NAME: SHEET NO. OF OF 28
	DESIGNER: CHECKED BY: DRAWN BY: DATE:	REVISIONS:	RYE PLAYLAND PARKWAY PATH

Segment #2 – North Street to Boston Post Road





LEMENT 2 - North Street to Parkway

shared-use pathway

North Street, to Old Post Rd and the bridge over Playland Parkway, then connecting to the northern side of Playland Parkway, to Rye Playland Amusement Park. Improvements will include:

- Shared use pathway along North Street;
- Sidewalk reconstruction, roadway striping and signage;
- “Share the Roadway” signs for cyclists using the roadway;
- Accessible ramps, stone retaining walls fencing and guiderails along parkway;



North Street at Proposed New Entrance to Path



Directional & Informational Signs



North Street Looking South



North Street Looking North

shared-use pathway



Parkway Near Old Post Road



Boston Post Road



New Pathway Route in Parkway R.O.W.

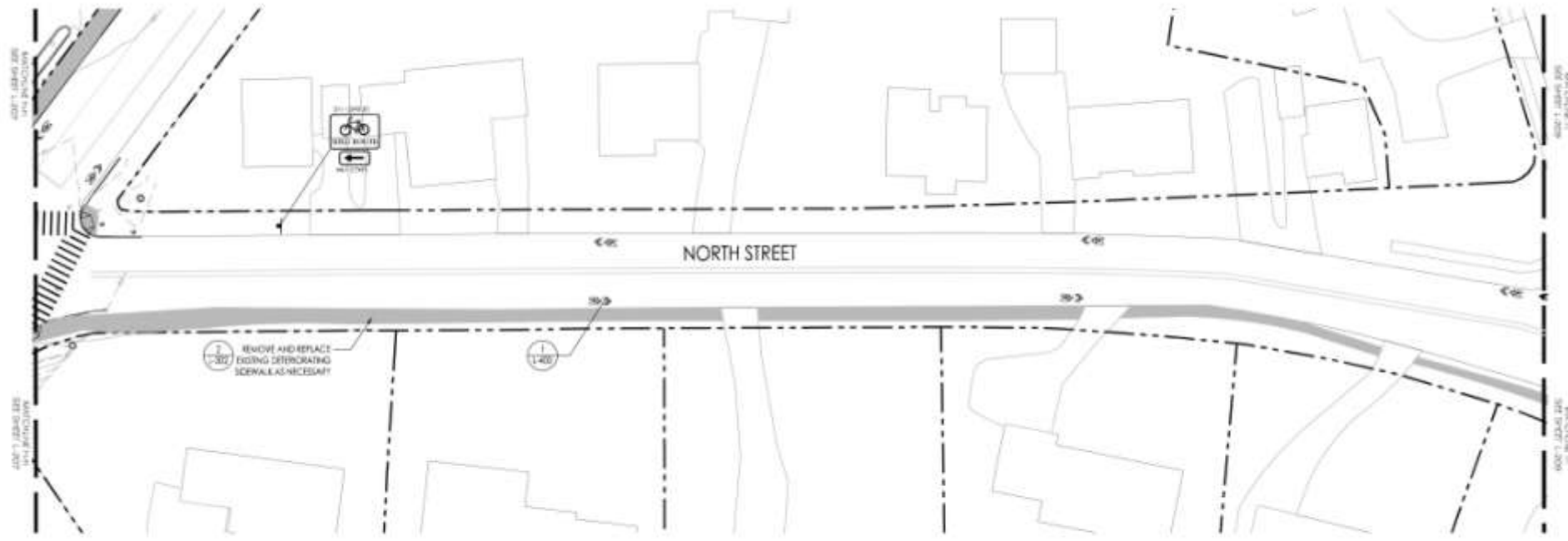
Playland Parkway Route Construction Drawings



Westchester
gov.com

Robert P. Astorino, Westchester County Executive
County Board of Legislators

Segment 2



LEGEND	
	PROPERTY LINE
	EXISTING LIGHT POLES
	EXISTING SIGNS
	EXISTING TRAFFIC LIGHTS
	EXISTING FIRE HYDRANT
	EXISTING CATCH BASIN
	EXISTING GUARDRAIL
	EXISTING VEGETATION
	STORAGE AND PATHWAY
	CONCRETE PEDESTRIAN RAMP
	SIGNS
	NEW GUARDRAIL

1 GENERAL PLAN
SCALE 1/8" = 1'



RBA ENGINEERS ARCHITECTS PLANNERS 10 WARDEN DRIVE, SUITE 201, MELVILLE, NY TEL: 516 434 7731 FAX: 516 434 9888 WWW: RBAONLINE.COM	PROJECT NO.: SHEET NO.:	WESTCHESTER COUNTY, NEW YORK DEPARTMENT OF PUBLIC WORKS AND TRANSPORTATION DIVISION OF ENGINEERING	PROJECT NO.: SHEET NO.:
	DESIGNER: DATE:	CHECKED BY: DATE:	DRAWN BY: DATE:
RYE PLAYLAND PARKWAY PATH		1-308	

Playland Parkway Route Construction Drawings



Westchester
gov.com

Robert P. Astorino, Westchester County Executive
County Board of Legislators

Segment 2



1 GENERAL PLAN
SCALE 1/8" = 1'



LEGEND	
	PROPERTY LINE
	EXISTING LIGHT POLES
	EXISTING SIGNS
	EXISTING TRAFFIC LIGHTS
	EXISTING FIRE HYDRANT
	EXISTING CATCH BASIN
	EXISTING GUARDRAIL
	EXISTING VEGETATION
	SIDEWALK AND PATHWAY
	CONCRETE PEDESTRIAN RAMP
	SIGNS
	NEW GUARDRAIL

RBA ENGINEERS ARCHITECTS PLANNERS 11 HAMMOND DRIVE, SUITE 201 MELVILLE, NY TEL: 631 681 7731 FAX: 631 681 8818 www.rbaeng.com	WESTCHESTER COUNTY, NEW YORK DEPARTMENT OF PUBLIC WORKS AND TRANSPORTATION DIVISION OF ENGINEERING	PROJECT NO. 12 OF 28 SHEET NO. 1-209
	RYE PLAYLAND PARKWAY PATH	DATE: 10/2011
DESIGNED BY: AUB BIRNBAUM CHECKED BY: AUB BIRNBAUM DRAWN BY: GABRIEL HUBERT	REVISIONS	SCALE: AS SHOWN

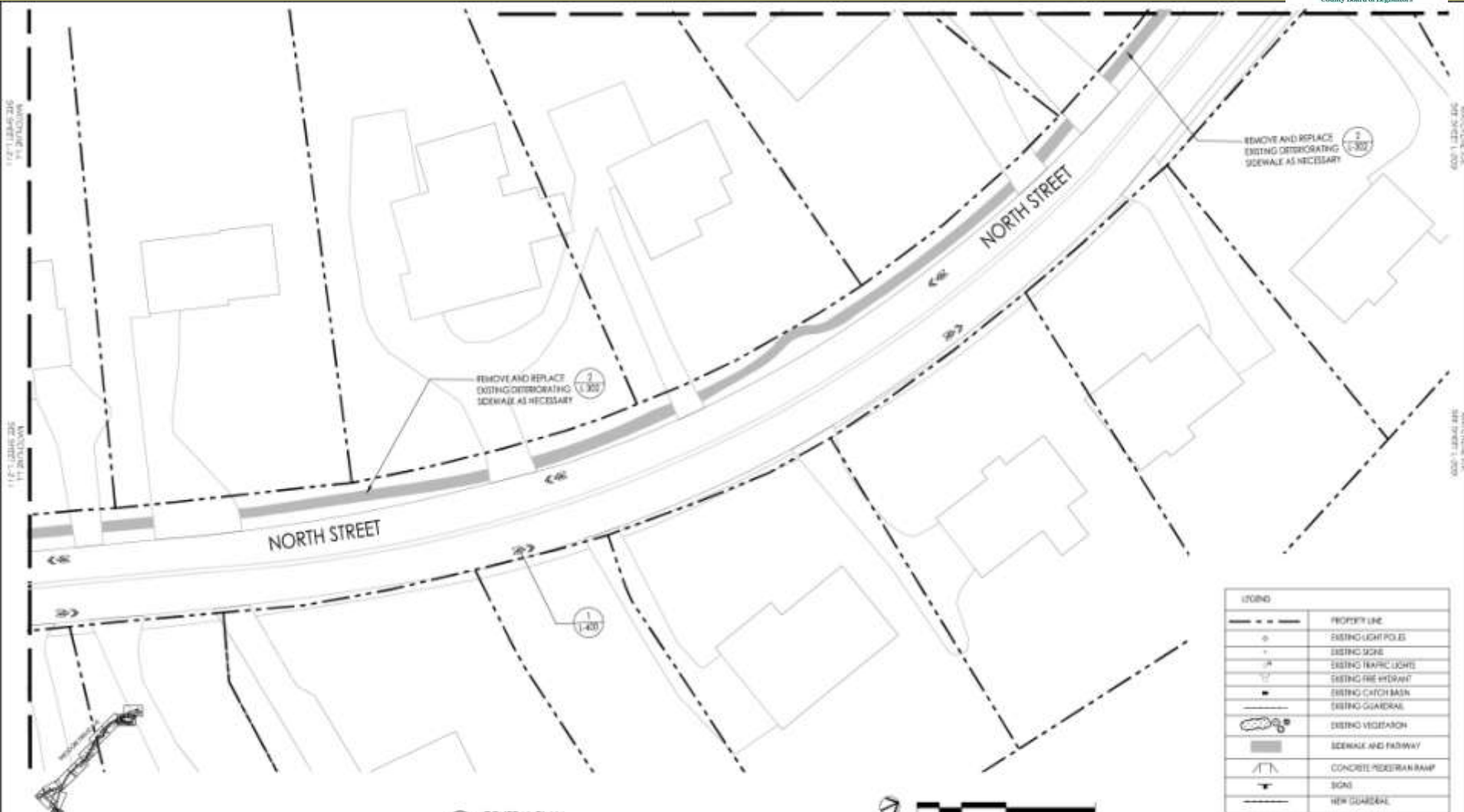
Playland Parkway Route Construction Drawings



Westchester
gov.com

Robert P. Astorino, Westchester County Executive
County Board of Legislators

Segment 2



LEGEND	
---	PROPERTY LINE
o	EXISTING LIGHT POLES
-	EXISTING SIDE
-	EXISTING TRAFFIC LIGHTS
-	EXISTING FIRE HYDRANT
-	EXISTING CATCH BASIN
-	EXISTING GUARDRAIL
-	EXISTING VEGETATION
-	SIDEWALK AND FADWAY
-	CONCRETE RETENTION BANK
-	SIGNS
-	NEW GUARDRAIL

1 GENERAL PLAN
SCALE: 1/8" = 1'-0"



RBA ENGINEERS ARCHITECTS PLANNERS 40 MARSHALL DRIVE SUITE 201 MELVILLE NY 11767 TEL: 631 584 2121 FAX: 631 584-5888 www.rbaeng.com	WESTCHESTER COUNTY, NEW YORK DEPARTMENT OF PUBLIC WORKS AND TRANSPORTATION DIVISION OF ENGINEERING	PROJECT NO.: SHEET NO.: 13 OF 28
	RYE PLAYLAND PARKWAY PATH L-210	DATE: 08/20/11 DRAWN BY: [Name] CHECKED BY: [Name]
DESIGNED BY: AUB BIRNBAUM CHECKED BY: AUB BIRNBAUM DRAWN BY: GABRIEL KOLBY	REVISIONS:	PROJECT TITLE:

Playland Parkway Route Construction Drawings



Westchester
gov.com

Robert P. Astorino, Westchester County Executive
County Board of Legislators

Segment 2



1 GENERAL PLAN
SCALE 1/8" = 1'



LEGEND	
---	PROPERTY LINE
o	EXISTING SIGN POLES
+	EXISTING SIGNS
⊗	EXISTING TRAFFIC SIGNS
⊕	EXISTING FIRE HYDRANT
■	EXISTING CATCH BASIN
—	EXISTING GUARDRAIL
🌳	EXISTING VEGETATION
▬	SIDEWALK AND PATHWAY
▬	CONCRETE PEDESTRIAN RAMP
▬	SCUM
---	NEW GUARDRAIL

<p>RBA ENGINEERS ARCHITECTS PLANNERS 15 WARDEN DRIVE, SUITE 204 MELVILLE, NY TEL: 631 684 7731 FAX: 631 684 8854 www.rbaonline.com</p>	DESIGNED BY: AUB BIRNBAUM CHECKED BY: AUB BIRNBAUM DRAWN BY: GABRIEL HUBERT	PROJECT NO.: 14-01-001 SHEET NO.: 14 OF 28 SCALE: AS SHOWN DATE: 03/20/11	WESTCHESTER COUNTY, NEW YORK DEPARTMENT OF PUBLIC WORKS AND TRANSPORTATION DIVISION OF ENGINEERING
	RYE PLAYLAND PARKWAY PATH		PROJECT NO.: 14-01-001 SHEET NO.: 14 OF 28 SCALE: AS SHOWN DATE: 03/20/11

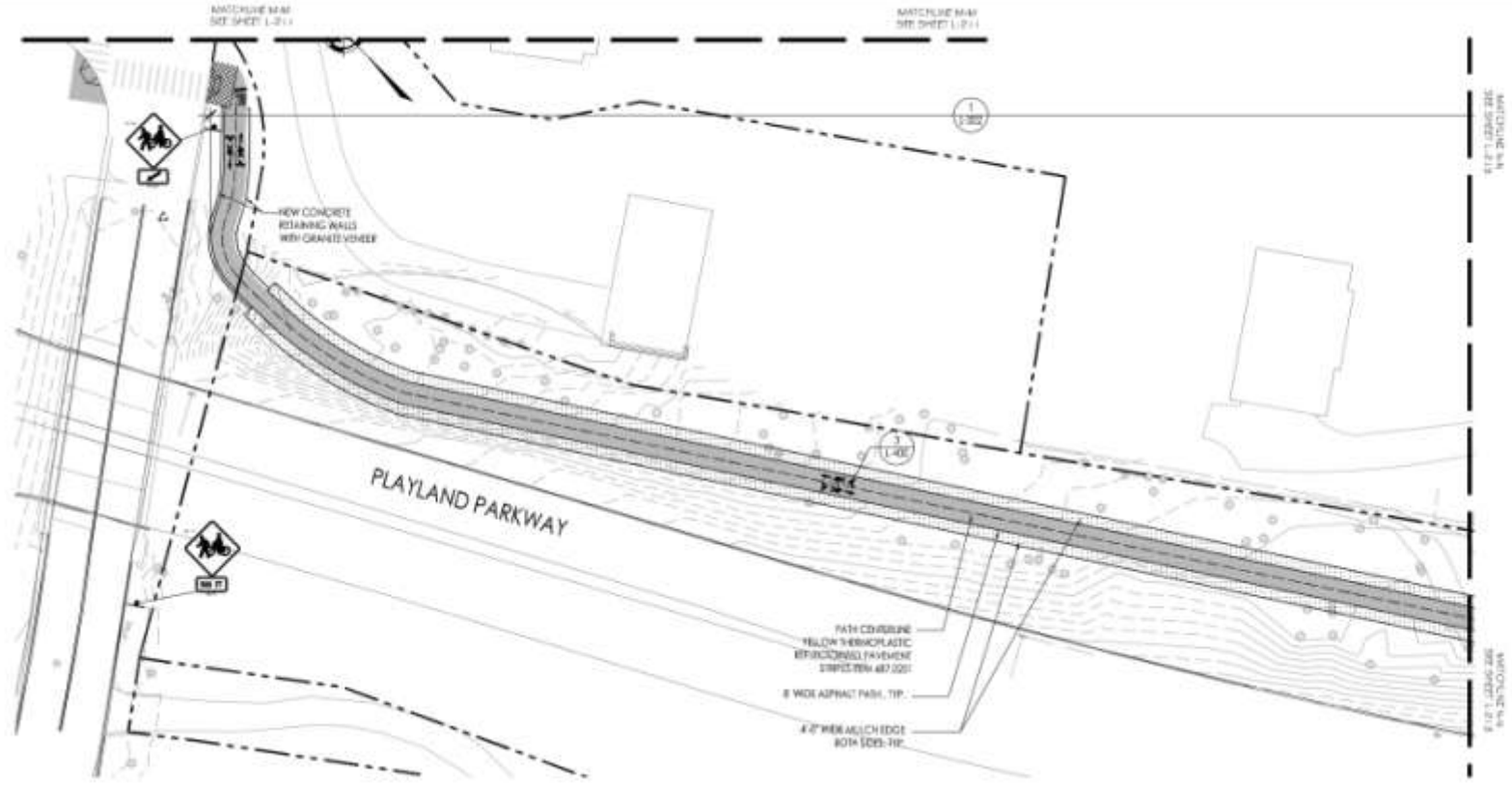
Playland Parkway Route Construction Drawings



Westchester
gov.com

Robert P. Astorino, Westchester County Executive
County Board of Legislators

Segment 2



LEGEND	
---	PROPERTY LINE
○	EXISTING LIGHT POLES
+	EXISTING SIGNS
⊗	EXISTING TRAFFIC LIGHTS
⌒	EXISTING FIRE HYDRANT
⊖	EXISTING CATCH BASIN
---	EXISTING GUARDRAIL
⊕	EXISTING VEGETATION
▨	SOORALE AND PATHWAY
▭	CONCRETE RETAINMENT WALL
⊕	SIGNS
---	NEW GUARDRAIL

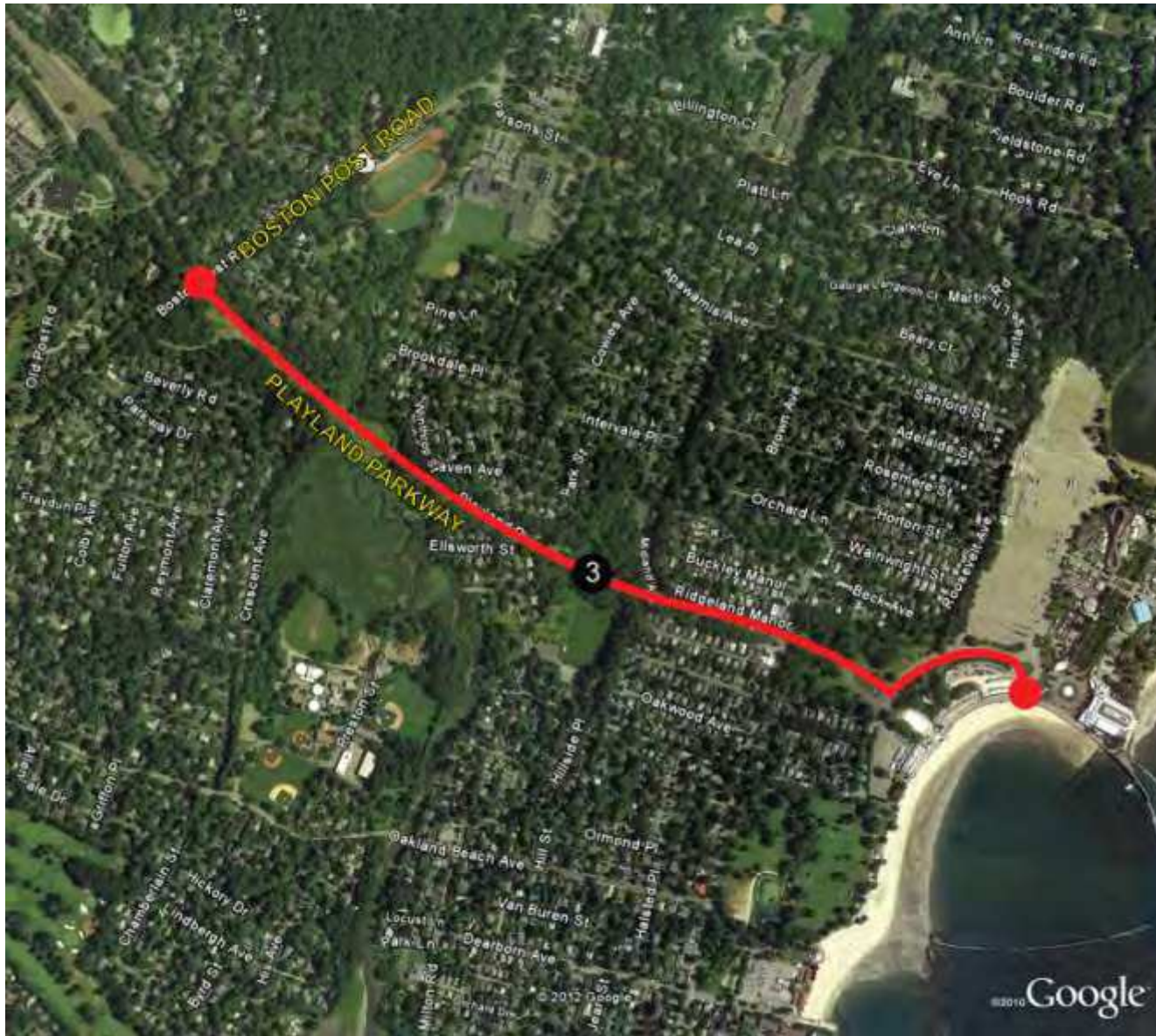


1 GENERAL PLAN
SCALE 1/8" = 1'



<p>RBA ENGINEERS ARCHITECTS PLANNERS 10 WARDEN DRIVE, SUITE 201 MELVILLE, NY TEL: 631 684 7731 FAX: 631 684 8854 www.rbaeng.com</p>	DESIGNED BY: AUB BISHOP	CHECKED BY: AUB BISHOP	DRAWN BY: GABRIEL HUBBY	DATE: 	SCALE: 	SHEET NO.: 15 OF 28	PROJECT:
	WESTCHESTER COUNTY, NEW YORK DEPARTMENT OF PUBLIC WORKS AND TRANSPORTATION DIVISION OF ENGINEERING						DRAWING NO.: 1-212
RYE PLAYLAND PARKWAY PATH							1-212

Segment #3 – Off Road Path, Boston Post Road to Amusement Park



SEGMENT 3 - Playland Parkway

shared-use parkway path

The longest stretch of the original pathway is along Playland Parkway. Improvements will include:

- Repave and widen the existing pathway;
- New Pedestrian Bridge spanning Blind Brook.
- Plantings to soften appearance of pathway elements;
- Guide rails, when necessary;
- Interpretive signage at the crossing over Blind Brook and at its wetlands.



A shopping district, residential community of single family houses, and the entrance to Playland Park all meet at the intersection of Playland Parkway and Forest Avenue (left).

Signage and crosswalk striping will facilitate better pedestrian connections between these areas.

Pedestrians and cyclists will cross Blind Brook off-road over a new footbridge and interpretive signs will describe the waterway and wetlands in the area.



The existing pathway adjacent to Playland Parkway (above) will be repaved and widened to improve pedestrian/cyclist safety.



Shared use parkway path



Existing Pathway Near Boston Post Road



Pathway Near Blind Brook

Shared use parkway path



Blind Brooke Bridge



Pathway Near Milton Road



End of Pathway at Amusement Park

Off road path – precedent images



Shared Use Wooded Path



Shared Use Wooded Path



Pathway Markings

Off road path – precedent images



Crossing signage



Trail crossing at roadway



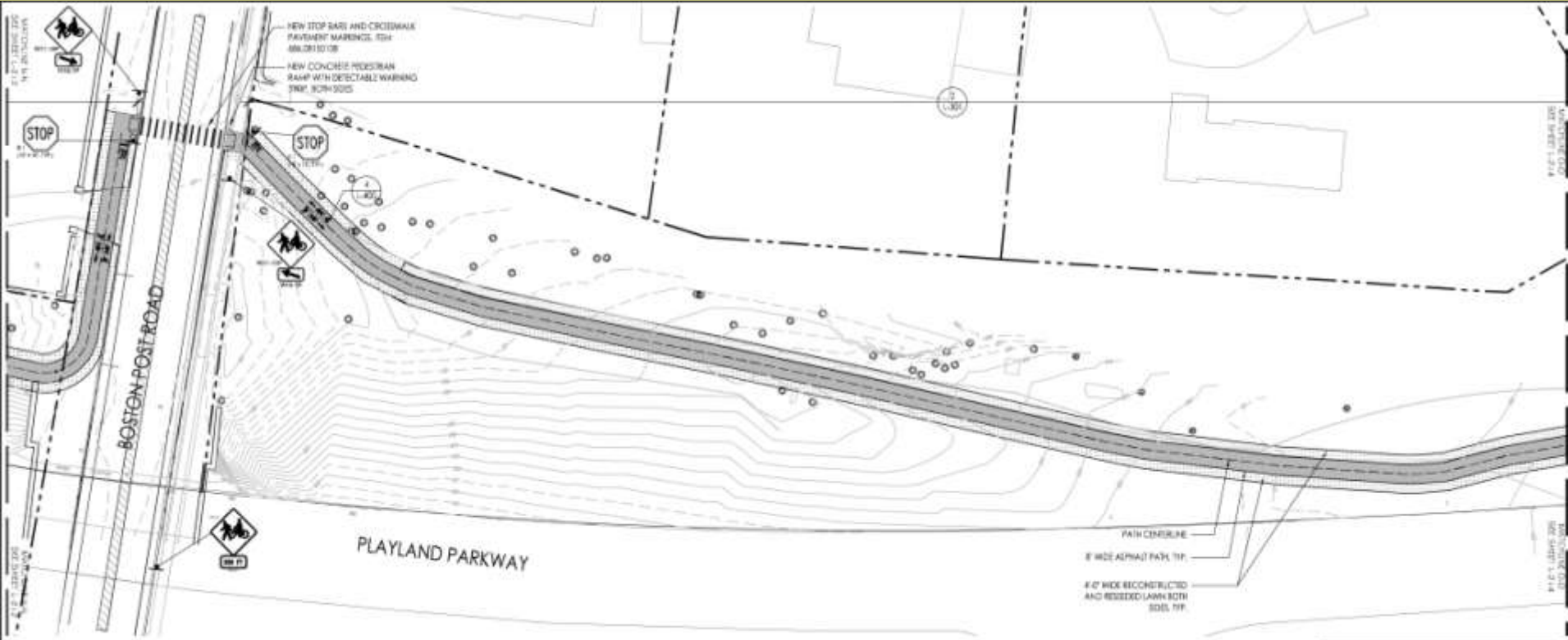
Directional signage

Playland Parkway Route Construction Drawings



Westchester.gov.com
 Robert P. Astorino, Westchester County Executive
 County Board of Legislators

Segment 3



LEGEND	
---	PROPERTY LINE
o	EXISTING LIGHT POLES
-	EXISTING SIGNS
o	EXISTING TRAFFIC LIGHTS
o	EXISTING FIRE HYDRANT
o	EXISTING CATCH BASIN
o	EXISTING GUARDRAIL
o	EXISTING VEGETATION
o	SEWAGE AND FISHWAY
o	CONCRETE PEDESTRIAN RAMP
o	SOILS
o	NEW GUARDRAIL

1 GENERAL PLAN
 SCALE: 1"=40'



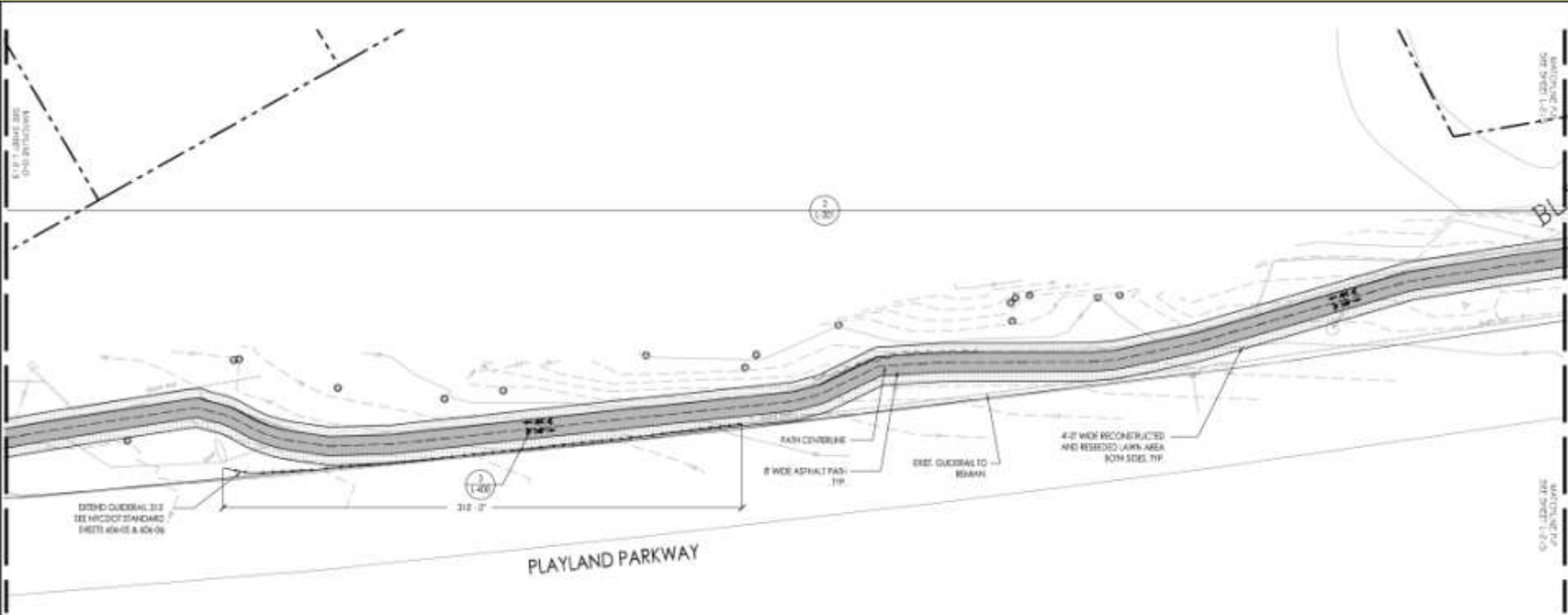
RBA ENGINEERS ARCHITECTS PLANNERS 15 WASHINGTON DRIVE, SUITE 201, MELVILLE, NY TEL: 631.899.7731 FAX: 631.899.8854 www.rbaeng.com	PROJECT NO.: SHEET NO.:	WESTCHESTER COUNTY, NEW YORK DEPARTMENT OF PUBLIC WORKS AND TRANSPORTATION DIVISION OF ENGINEERING	PROJECT NO.: SHEET NO.:
	DESIGNER: DATE:	CHECKED BY: DATE:	DRAWN BY: DATE:
RYE PLAYLAND PARKWAY PATH		1-213	

Playland Parkway Route Construction Drawings

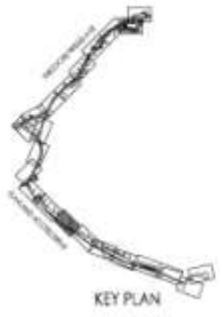


Westchester
gov.com
Robert P. Astorino, Westchester County Executive
County Board of Legislators

Segment 3



LEGEND	
	PROPERTY LINE
	EXISTING LIGHT POLES
	EXISTING SIGNS
	EXISTING TRAFFIC LIGHTS
	EXISTING FIRE HYDRANT
	EXISTING CATCH BASIN
	EXISTING GUESSAL
	EXISTING VEGETATION
	SIDEWALK AND PATHWAY
	CONCRETE PEDESTRIAN RAMP
	SIGN
	NEW GUESSAL



1 GENERAL PLAN
SCALE 1/8" = 1'-0"

1" = 10'

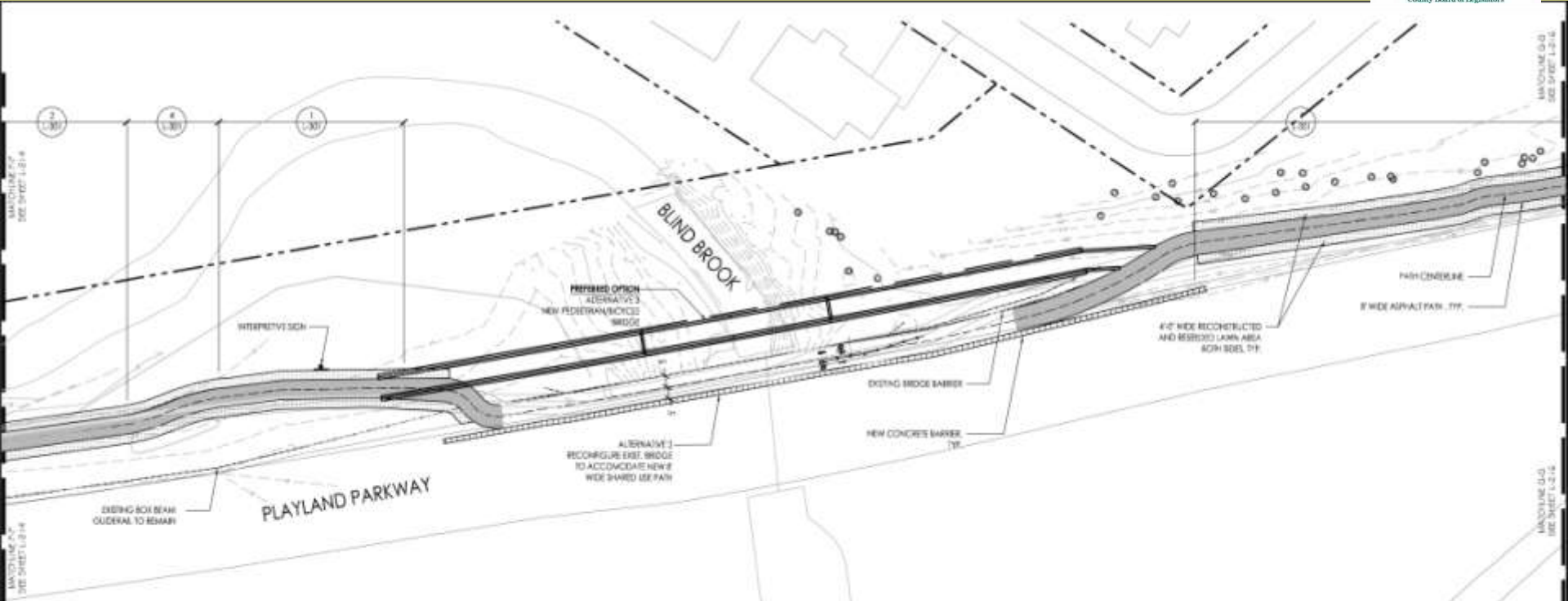
RBA ENGINEERS ARCHITECTS PLANNERS 14 WINDSOR DRIVE, SUITE 201 MELVILLE, NY TEL: 631 681-7731 FAX: 631 681-9881 www.rbaeng.com	PROJECT NO.: SHEET NO.: 17 OF 26
	WESTCHESTER COUNTY, NEW YORK DEPARTMENT OF PUBLIC WORKS AND TRANSPORTATION DIVISION OF ENGINEERING
DRAWN BY: A.M. BIRNBAUM CHECKED BY: A.M. BIRNBAUM DESIGNED BY: GREGORY HUNTER	PROJECT TITLE: RYE PLAYLAND PARKWAY PATH SCALE: AS SHOWN SHEET NO.: 17 OF 26 DATE: 1/24

Playland Parkway Route Construction Drawings



Westchester
gov.com
Robert P. Astorino, Westchester County Executive
County Board of Legislators

Segment 3



1 GENERAL PLAN
SCALE: 1/8\"/>



LEGEND	
	PROPERTY LINE
	EXISTING LIGHT POLES
	EXISTING SIGNS
	EXISTING TRAFFIC LIGHTS
	EXISTING FHE HYDRANT
	EXISTING CATCH BASIN
	EXISTING GUARDRAIL
	EXISTING VEGETATION
	SIDEWALK AND PATHWAY
	CONCRETE PREGRADE RAMP
	SIKES
	NOV GUARDRAIL

RBA ENGINEERS ARCHITECTS PLANNERS 15 WARDEN DRIVE, SUITE 201, MELVILLE, NY TEL: 631.684.7731 FAX: 631.684.8854 www.rbagroup.com	DESIGNED BY: AUB BIRNBAUM	CHECKED BY: AUB BIRNBAUM	DRAWN BY: GABRIEL HUBERT	DATE: 10/20/2011	SCALE: AS SHOWN	REVISIONS:	WESTCHESTER COUNTY, NEW YORK DEPARTMENT OF PUBLIC WORKS AND TRANSPORTATION DIVISION OF ENGINEERING	PROJECT NUMBER: 10-001	SHEET NO.: 18 OF 28
	RYE PLAYLAND PARKWAY PATH							SCALE: SHEET 18 OF 28 DATE: 10/20/11	1-213

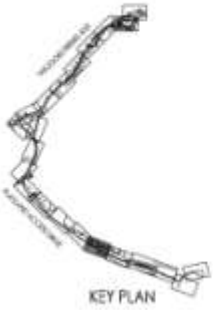
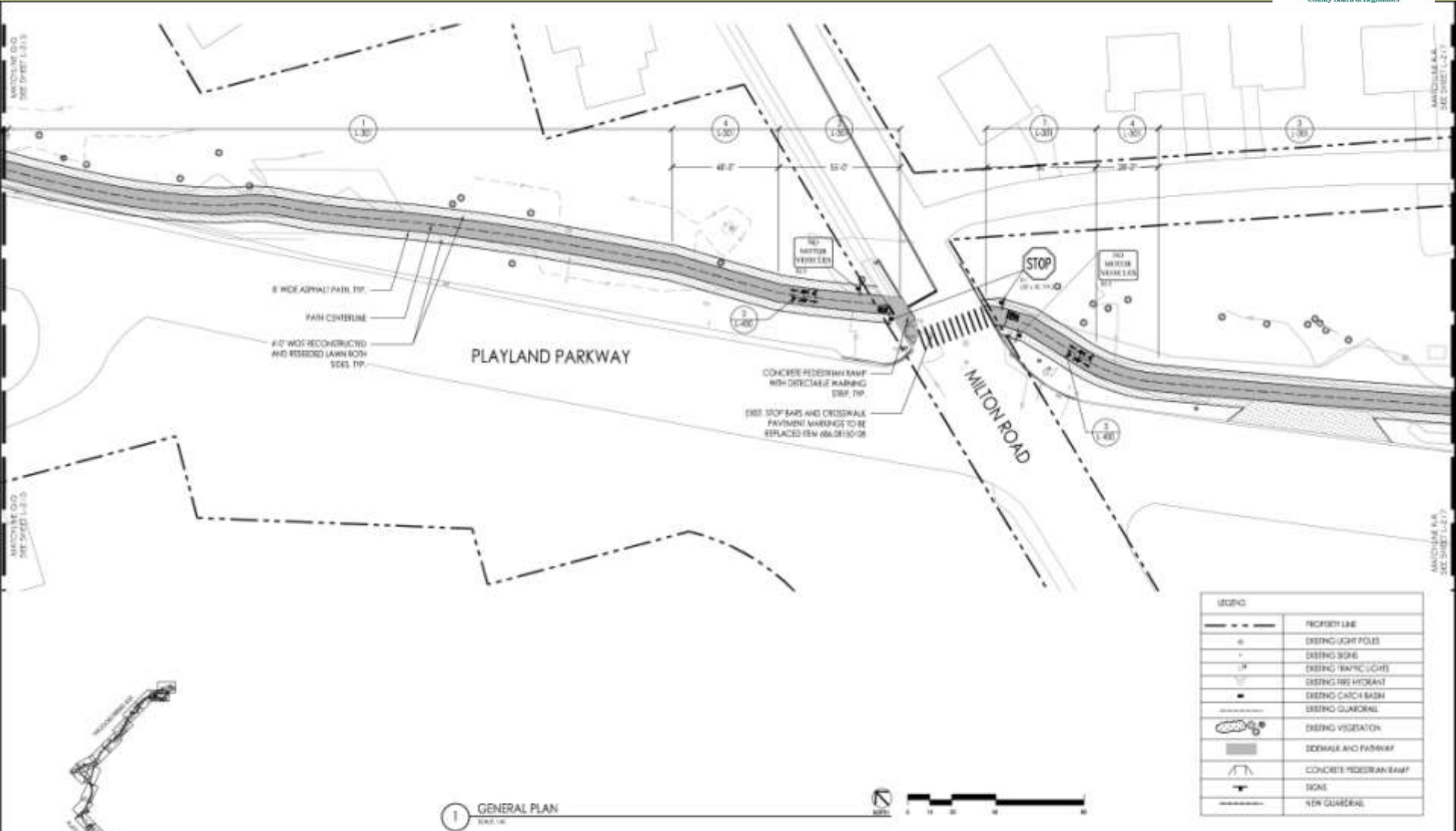
Playland Pathway Route Construction Drawings



Westchester.gov.com

Robert P. Astorino, Westchester County Executive
County Board of Legislators

Segment 3



1 GENERAL PLAN
SCALE: 1"=40'

RBA ENGINEERS ARCHITECTS PLANNERS
14 WARDEN DRIVE, SUITE 201, MELVILLE, NY 11767
TEL: 631.684.7747 FAX: 631.684.8844 WWW: RBAENR.COM

DESIGNED BY: AUB BIRNBAUM
CHECKED BY: AUB BIRNBAUM
DRAWN BY: GABRIEL HUBERT

NO.	DESCRIPTION	DATE	BY	CHKD.	APP'D.

WESTCHESTER COUNTY, NEW YORK
DEPARTMENT OF PUBLIC WORKS AND TRANSPORTATION
DIVISION OF ENGINEERING

RYE PLAYLAND PARKWAY PATH

SCALE: SHEET 1/2 (OF 2)
SHEET NO. 19 OF 28
DATE: 08/20/11

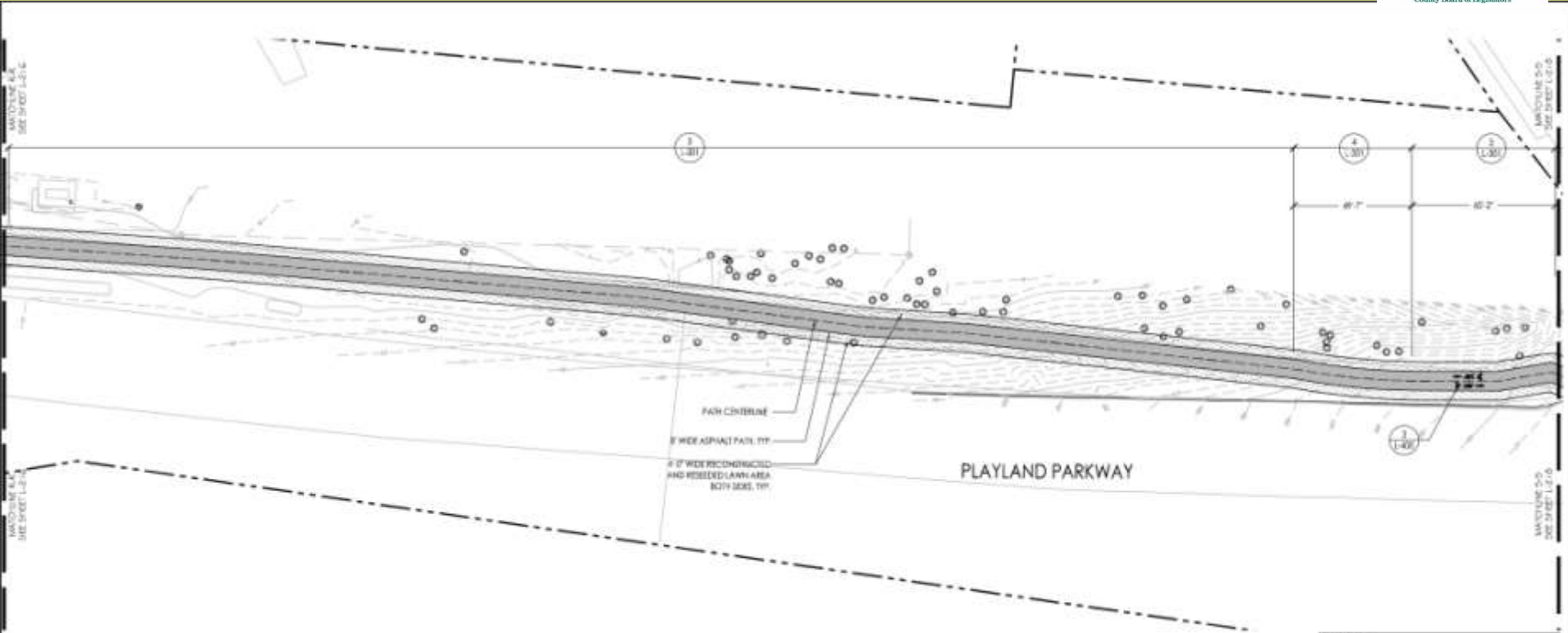
Playland Pathway Route Construction Drawings



Westchester
gov.com

Robert P. Astorino, Westchester County Executive
County Board of Legislators

Segment 3



PLAYLAND PARKWAY

FAIR CENTERLINE

8' WIDE ASPHALT PAVL. TYP.

4' WIDE RECONSTRUCTED AND RESEDED LANE AREA WITH SEBS, TYP.

LEGEND	
	PROPERTY LINE
	EXISTING LIGHT POLES
	EXISTING ROAD
	EXISTING TRAFFIC LIGHTS
	EXISTING FIRE HYDRANT
	EXISTING CATCH BASIN
	EXISTING GUARDRAIL
	EXISTING VEGETATION
	SEEWALK AND PATHWAY
	CONCRETE PEDIAN RAMP
	DOOR
	NEW GUARDRAIL

1 GENERAL PLAN
SCALE 1/8" = 1'-0"



RBA ENGINEERS ARCHITECTS PLANNERS 11 WARDEN DRIVE, SUITE 204 MELVILLE, NY 11761 TEL: 609 261 7731 FAX: 609 261 9999 WWW: rbaeng.com	PROJECT NO. _____ SHEET NO. 20 OF 28
	WESTCHESTER COUNTY, NEW YORK DEPARTMENT OF PUBLIC WORKS AND TRANSPORTATION DIVISION OF ENGINEERING
DESIGNER: AUB BIRNBAUM CHECKED BY: AUB BIRNBAUM DRAWN BY: GABRIEL HUBERT	RYE PLAYLAND PARKWAY PATH 4-217

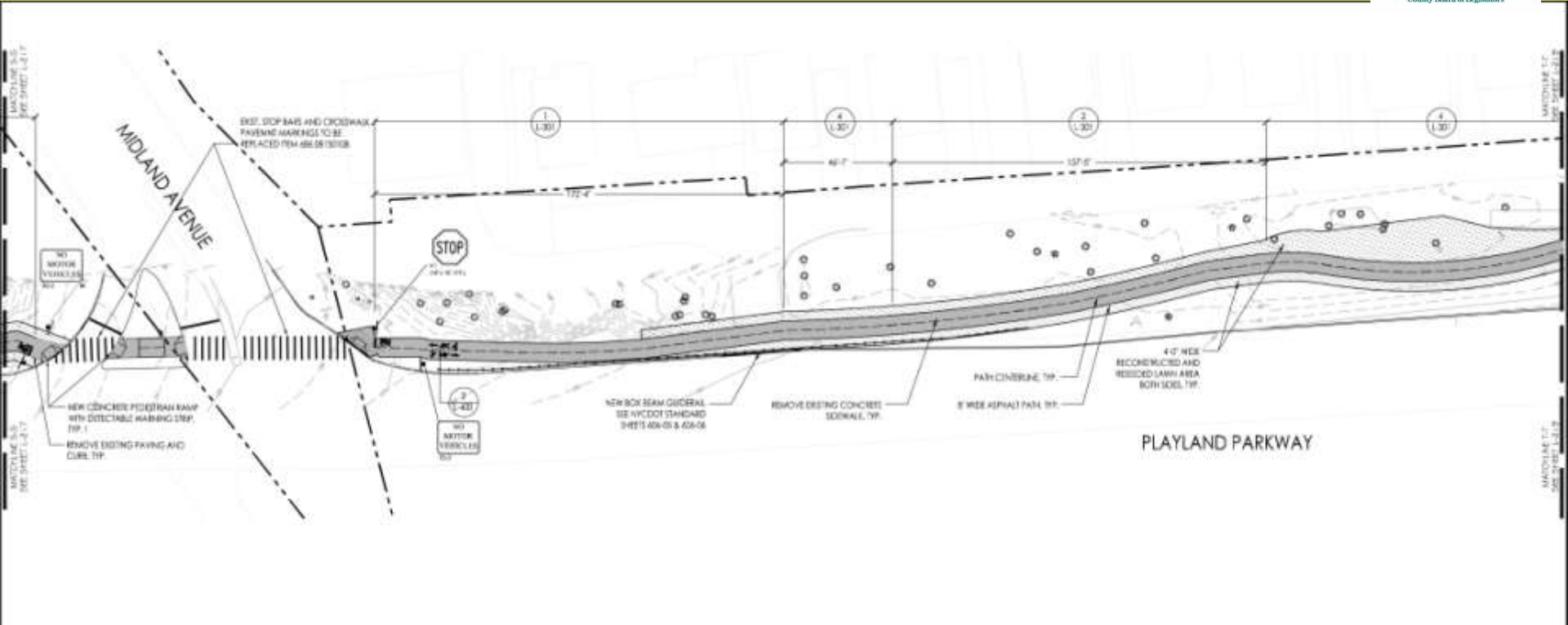
Playland Parkway Route Construction Drawings



Westchester
gov.com

Robert P. Astorino, Westchester County Executive
County Board of Legislators

Segment 3



PLAYLAND PARKWAY



1 GENERAL PLAN
SCALE: 1" = 100'

LEGEND	
	PROPERTY LINE
	EXISTING LIGHT POLES
	EXISTING SIGNS
	EXISTING TRAFFIC LIGHTS
	EXISTING FIRE HYDRANTS
	EXISTING CATCH BASINS
	EXISTING GUARDRAIL
	EXISTING VEGETATION
	SIDEWALK AND PATHWAY
	CONCRETE PEDESTRIAN BAMP
	SIGN
	NEW GUARDRAIL

RBA ENGINEERS ARCHITECTS PLANNERS 10 MARSH DRIVE, SUITE 201, MELVILLE, NY TEL: 631 681 7731 FAX: 631 681 9854 www.rbaeng.com	DESIGNED BY: AUB BISHOP	CHECKED BY: AUB BISHOP	DRAWN BY: GABRIEL HUBERT	DATE: 08/14/18	SCALE: AS SHOWN	WESTCHESTER COUNTY, NEW YORK DEPARTMENT OF PUBLIC WORKS AND TRANSPORTATION DIVISION OF ENGINEERING	PROJECT NUMBER: 21-02-08	SHEET NO.: 21 OF 28
	RYE PLAYLAND PARKWAY PATH						SCALE: SHEET PLAN: 08/28/18	4-218

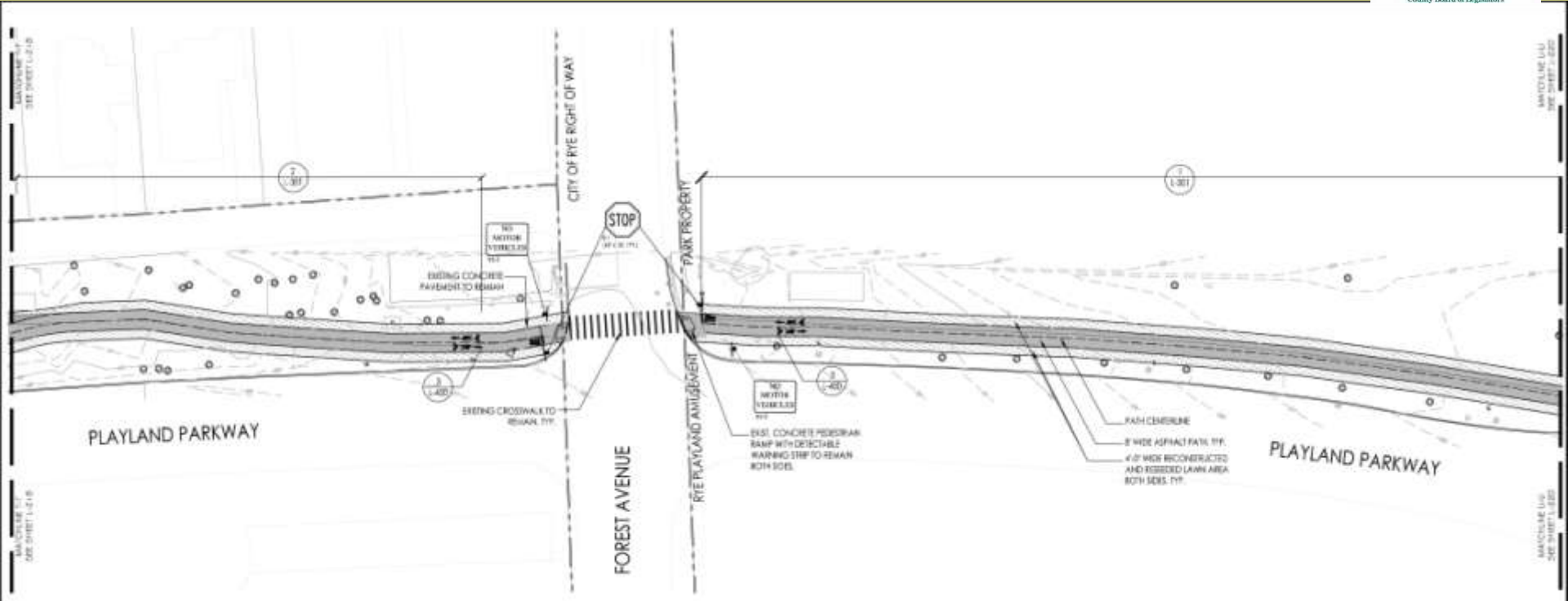
Playland Pathway Route Construction Drawings



Westchester
gov.com

Robert P. Astorino, Westchester County Executive
County Board of Legislators

Segment 3



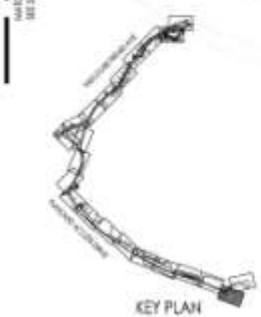
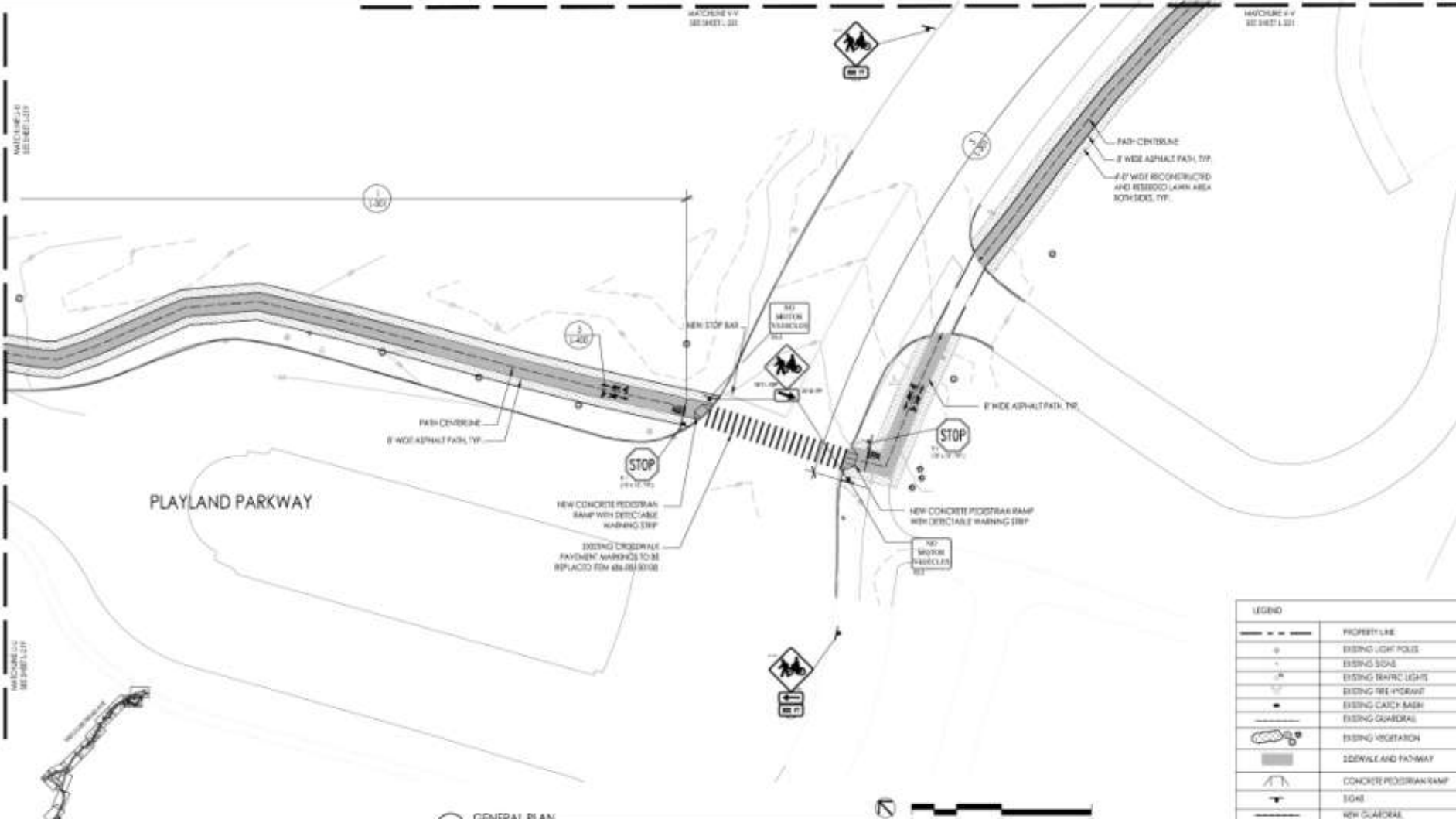
1 GENERAL PLAN
SCALE: 1/8" = 1'-0"



LEGEND	
	PROPERTY LINE
	EXISTING SOFT FIELDS
	EXISTING SCHED
	EXISTING TRAFFIC LIGHTS
	EXISTING FIRE HYDRANT
	EXISTING CATCH BASIN
	EXISTING GUARDRAIL
	EXISTING VEGETATION
	SEEWALL AND PAVEMNT
	CONCRETE PEDESTRIAN BAMP
	SIGN
	NEW GUARDRAIL

RBA ENGINEERS ARCHITECTS PLANNERS 11 WASHINGTON DRIVE SUITE 200 MELVILLE NY 11767 TEL: 516 466 1211 FAX: 516 466 1212 www.rbaeng.com	PROJECT NO.: SHEET NO.:	WESTCHESTER COUNTY, NEW YORK DEPARTMENT OF PUBLIC WORKS AND TRANSPORTATION DIVISION OF ENGINEERING	PROJECT NAME: SHEET NO.:
	DESIGNER: CHECKED BY: DRAWN BY:	DATE: SCALE: APPROVED BY:	RYE PLAYLAND PARKWAY PATH 1-219

Segment 3



LEGEND	
---	PROPERTY LINE
o	EXISTING LIGHT POLES
-	EXISTING SIGNS
⊙	EXISTING TRAFFIC LIGHTS
⊙	EXISTING TREE HYDRANT
⊙	EXISTING CATCH BASIN
⊙	EXISTING GUARDRAIL
⊙	EXISTING VEGETATION
▨	SIDEWALK AND PATHWAY
▨	CONCRETE PEDESTRIAN RAMP
▨	SIGNS
▨	NEW GUARDRAIL

1 GENERAL PLAN
SCALE: 1/8" = 1'-0"

RBA ENGINEERS ARCHITECTS PLANNERS 14 WARDEN DRIVE, SUITE 201, MELVILLE, NY 11767 TEL: 609.894.7747 FAX: 609.894.8868 WWW: RBAONLINE.COM	WESTCHESTER COUNTY, NEW YORK DEPARTMENT OF PUBLIC WORKS AND TRANSPORTATION DIVISION OF ENGINEERING	PROJECT NUMBER: _____ PROJECT NAME: _____ SHEET NO.: 25 OF 28 SCALE: AS SHOWN DATE: 03/20/11
	RYE PLAYLAND PARKWAY PATH 1-220	
DESIGNED BY: AUB BISHOP CHECKED BY: AUB BISHOP DRAWN BY: GREGORY HUNTER	REVISIONS NO. DATE BY DESCRIPTION	PROJECT NUMBER: _____ PROJECT NAME: _____ SHEET NO.: _____ SCALE: _____ DATE: _____

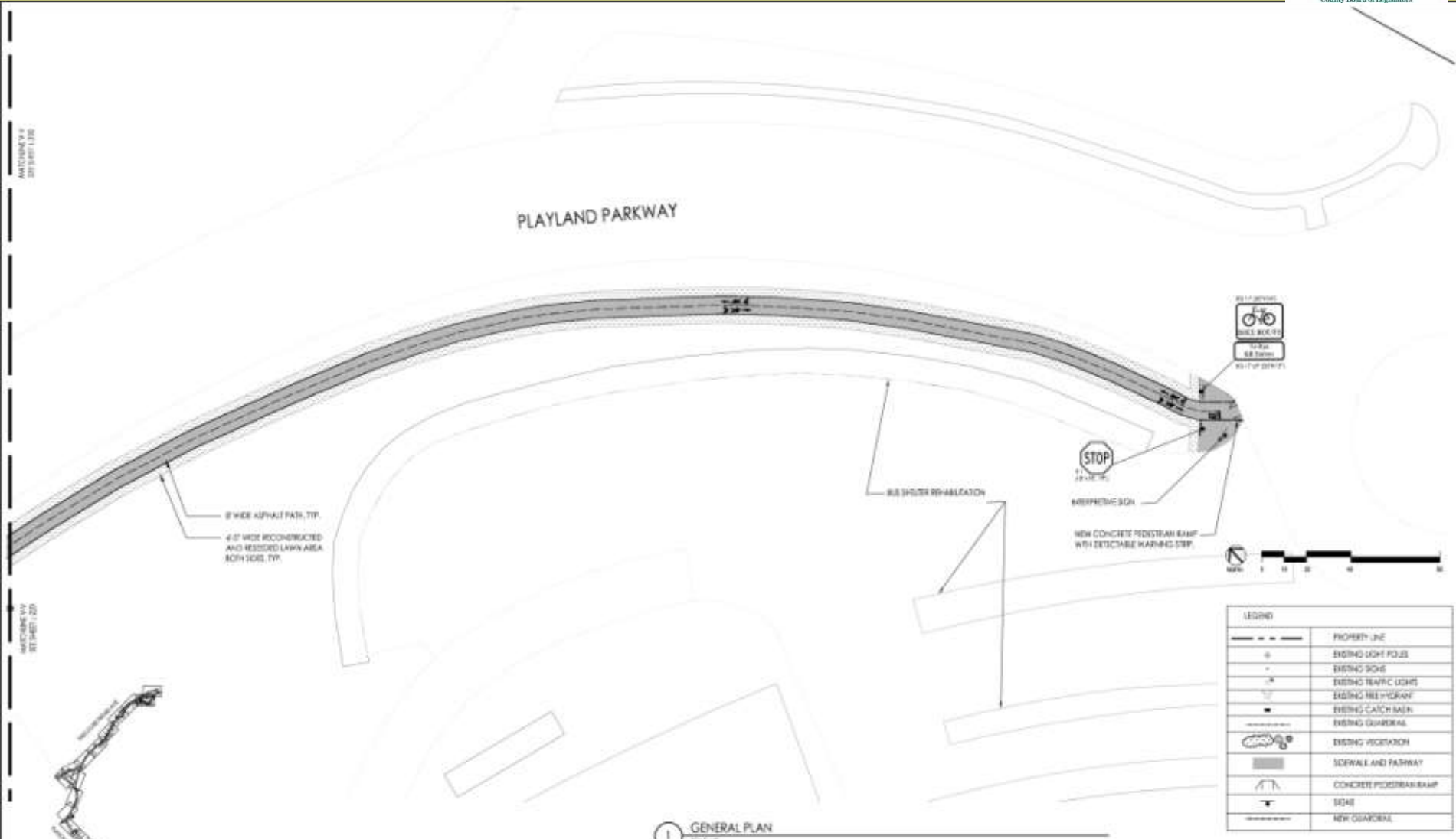
Playland Parkway Route Construction Drawings



Westchester
gov.com

Robert P. Antonio, Westchester County Executive
County Board of Legislators

Segment 3



LEGEND	
	PROPERTY LINE
	EXISTING LIGHT POLES
	EXISTING SIGNS
	EXISTING TRAFFIC LIGHTS
	EXISTING TREE/VEGETATION
	EXISTING CATCH BASIN
	EXISTING GUARDRAIL
	EXISTING VEGETATION
	SIDEWALK AND PATHWAY
	CONCRETE PEDESTRIAN RAMP
	ROAD
	NEW GUARDRAIL

1 GENERAL PLAN
SCALE: 1"=40'



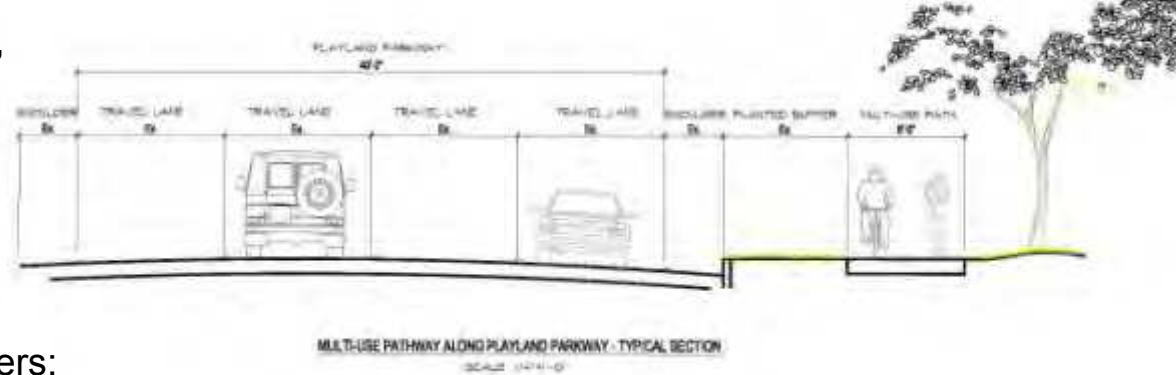
RBA ENGINEERS ARCHITECTS PLANNERS 14 WARDEN DRIVE, SUITE 201 MELVILLE, NY TEL: 631 881-7731 FAX: 631 881-8858 www.rbaeng.com	PROJECT NO.: SHEET NO.: 24 OF 28 SCALE: AS SHOWN DATE: 08/2011	WESTCHESTER COUNTY, NEW YORK DEPARTMENT OF PUBLIC WORKS AND TRANSPORTATION DIVISION OF ENGINEERING
	RYE PLAYLAND PARKWAY PATH 1-21	
DESIGNED BY: AUB BIRNBAUM CHECKED BY: AUB BIRNBAUM DRAWN BY: GABRIEL HUBERT	REVISIONS:	PROJECT NUMBER:

Playland Amusement Park

entry node

At the entrance to Rye Playland Park, improvements will include:

- Directional & informational signs;
- Connection to the amusement park, boardwalk & area buses;
- Refurbishment of historic bus shelters;
- Interpretive materials showcasing the history of Playland & the region;
- Bicycle racks



Typical off-road pathway section at Rye Playland.



The entrance drive to the National Historic Landmark, Playland Park (above), features views of Long Island Sound framed by the park's bathhouse .



Pavement markings, information kiosks, and bicycle racks will be installed to improve pedestrian access in this area, and colorful interpretive signs will illustrate aspects of the park's history.

Pathway Materials & Amenities

creating a distinctive route

- Plantings
- I.D. Signs
- Pavement markings
- Railings
- Retaining walls

Native plantings along the pathway create a buffer from traffic and provide a more pleasant experience for both people on the path and the roadway.



Stone retaining walls will be required at an accessible ramp to be installed adjacent to Boston Post Road. Guard rails will be installed as needed.



Site furnishings appropriate to the context will be installed at key points along the route.



Wayfinding and pathway I.D. signs will help create a cohesive and clearly-marked route.

Interpretive Signs

historical highlights



Interpretive signs will be located at significant junctures along the pathway, and will include information about local history, environmental issues and facts about the Playland amusement park and region.

wetlands & waterways



Rye Playland Amusement Park abuts the Long Island Sound – an ecosystem with abundant wildlife, sweeping vistas, and a host of environmental issues. Interpretive signs will inform & educate pathway users about the Sound’s natural history as well as key issues of the day.
Below: The shoreline looking out over the Sound.



The pathway route will cross two waterways – Blind Brook and Beaver Swamp Brook. Interpretive signs will bring greater awareness of their presence and provide information about environmental issues such as water quality, flora and fauna.